

2009 年伊春市城市建设投资开发有限责任公司 企业债券募集说明书



伊春市城市建设投资开发有限责任公司

主 承 销 商



海通证券股份有限公司
HAITONG SECURITIES CO.,LTD.

海通证券股份有限公司

二〇〇九年九月

1	2009			
	" 09	"		
2		12		
3	6			
4				7.00%
			Shibor	
	4.82%			
			www.Shibor.org	
	Shibor		2.18%	
		3		
0-100				3
	7.00%		3	
5				
	3		3	
0 100				0.01%
6				3
	15			
7				
				3

8

3

9

10

2009 9 7 2009 9

11 5

11

A+

AA-

12

(BT)

(BT)

(BT)

30.45

.....1

.....2

.....2

.....5

.....9

.....9

.....10

.....10

.....11

.....13

.....19

.....26

.....31

.....31

.....33

.....39

.....43

.....45

.....46

.....46

12 2009

2009

/

/

[2009]2262

0458-3887505
0458-3887506
153000

98

010-88027099 88027266 88027151
010-88027190
100044
www.htsec.com

42

101

3

022-28451647 28451895

022-28451612

300061

2

5

10

5

8

010-88656571

010-88656322

100045

1

24

D

24

D

0371-63581566-7207

0371-63581337

450012

2

111

22

0755-82033481

0755-82032850

518033

3

357

166

A 2905

0551-5161701 5161709

0551-5161828

230069

33

B 5

010-88087971 88087972

010-88086356

100032

100 1

20 2008

32

1 13

0371-65356690/91/93 8102

0371-65356007

450008

26

A 2901

010-51087768

010-84583355

100125

0458-3608029

0458-3608026

153000

70

70

13354585815

0458-3604015

153000

2009

12

6

7.00%

Shibor

4.82%

Shibor

www.Shibor.org

2.18%

3

0-100

7.00%

3

100

1,000

1,000

3

3

0 100

0.01%

3

15

3

3

9 11 5

2009 9 7 2009

2009 9 7

9 7

2009 9 7

2015 9 6

2009 9 7 2012 9 6

2010 2015 9 7

2010

2012 9 7

2015 9 7

2012 9 7

(BT)

(BT)

(BT)

30.45

AA-

A+

www.chinabond.com.cn

2010 2015 9 7

2010 2012 9 7 ()

2015 9 7

2012

9 7 ()

3
0.01%

0 100

3

3

15

3

1,000

1,000

2001 11

2001 86

2002 1 24
268,149

5% 4 95%

2008 12 31

39.48 30.88 21.73% 2008

1.27

2001 86

2002 12

10 31 2002

7 2006

2006 45

268,149

1

1

2

3

4

5

6

7

8

9

10

11

2

1

2

3

4

5

6

7

8

9

10

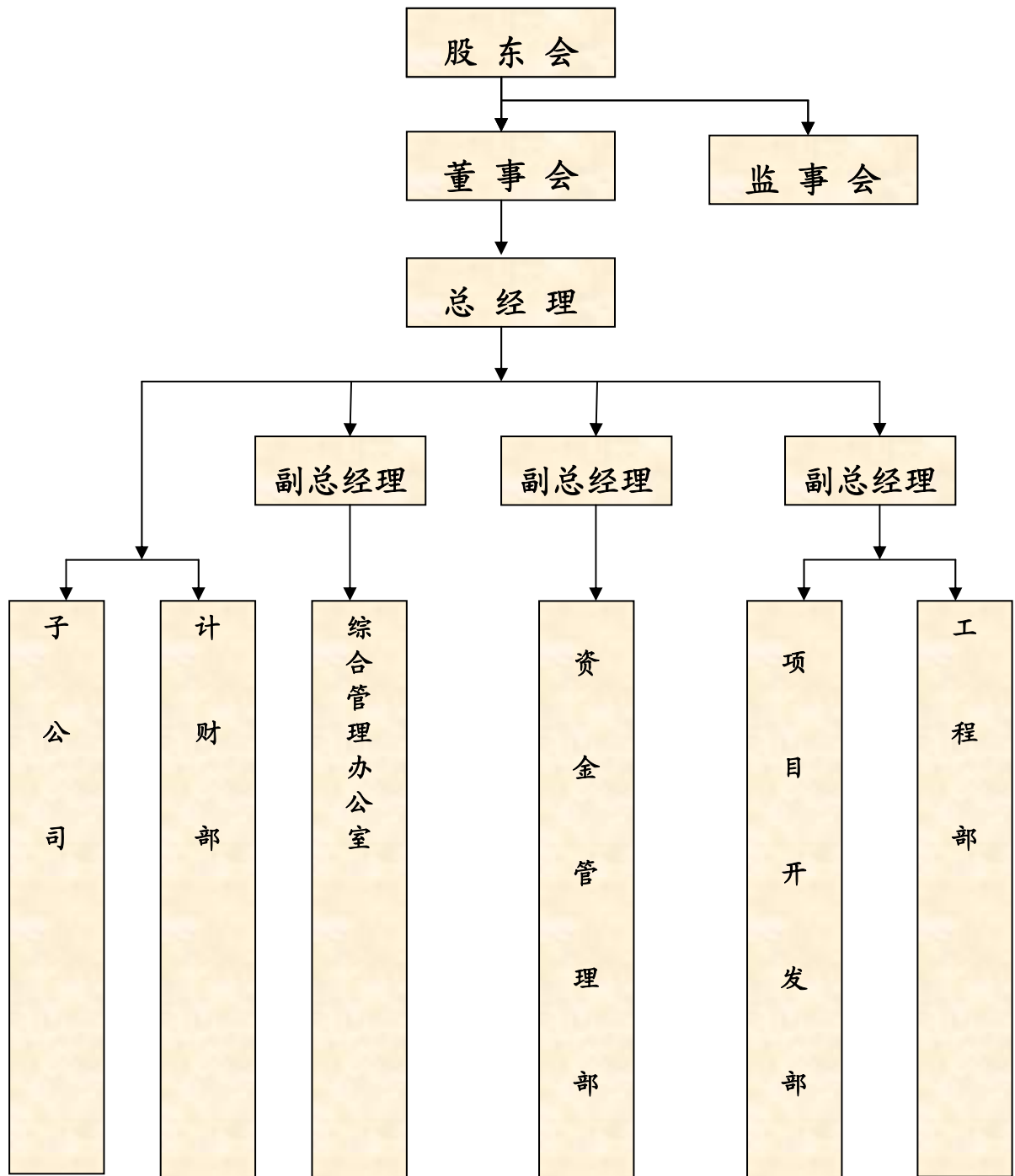
3

1

2

3

4
5
4
1
2 3
4
5 6 7



	1985 7	2,222	100%	
	1963 3	1,990	100%	
	1998 6	2,000	100%	
	2005 8	3,000	93%	

1
 2,222
 207,430,664
 53,164,122
 23,311,631
 1985 7 23
 2002 12
 2008
 94,317,518 2008
 11,677,549
 2008
 31,082,174
 100%

2
 1,990
 163,053,227
 47,993,484
 100%
 1963 3 30
 2008
 140,988,589 2008
 46,333,848
 14,443,000
 2008
 35,995,113
 2008

3
 2,000
 7,000,000
 2008
 1998 6
 2008
 51,493,683
 9,311,264
 6,983,448
 100%

4			2005	8
	3,000			
		2008	48,500	
-108,935		-108,935	2008	
	93%			
1		1954		2
2		1971		1
3		1961		12
4		1972		4
5		1961		3
6		1958		1
7		1970		5
8		1964		1
9		1970		3

"

"

83.8%

"

"

"

"

2009 9

"

"

"

"

"

"

1

2005

2006

2008

1.86

1.88

1.81

2

3

2006 2008

2006	5,052	4,583	3,913	13,548
2007	5,263	4,628	10,523	20,414
2008	5,316	4,638	10,523	20,477

	15,631	13,849	24,959	54,439
--	--------	--------	--------	--------

1

				2006
2008		0.39	1.05	1.05
		24.25%	43.50%	41.06%

2

				2006
2008		0.51	0.53	0.53
		31.31%	21.75%	20.75%

2007

		3.8		
	393			
5000-6000				
			2008	10

3

				2006
2008		0.46	0.46	0.46
		28.40%	19.13%	18.10%

2007

3.85

6000

3000-4500

2008 10

" "

"

"

" "

34.53

3.85

3.78

25.4

1.5

" "

" "

" "

2010

682

2010

1.45

2006 2008

	2008	2007	2006
	12 31	12 31	12 31
	394,750.60	365,309.19	342,931.26
	87,061.90	64,058.91	47,221.38
	85,791.58	69,085.98	58,297.22
	24,141.58	18,305.98	18,297.22
	200.93	201.70	201.20
	308,758.09	296,021.52	284,432.84

	2008	2007	2006
	25,627.02	24,192.61	16,134.64
	7,054.72	7,305.53	6,554.09
	5,846.28	5,511.46	5,567.71
	16,984.70	17,293.90	17,207.74
	12,736.56	11,588.69	11,527.70

	2008	2007	2006
	3,954.37	4,886.07	1,716.29
	-8,835.20	-12,724.35	-8,523.10

2006 2008

	2008	2007	2006
	25,627	24,193	16,135
	7,055	7,306	6,554
	11,112	11,817	11,582
	16,985	17,294	17,208
	12,737	11,589	11,528
	27.53%	30.20%	40.62%
	3.35%	3.27%	4.49%
	4.21%	3.99%	6.44%

1 = / × 100%

2 ÷ × 100%

3 ÷ × 100%

2006 2008 2007

50% 2006

6% 2006

2008 1.72 1.73 1.70

40.62% 30.20% 27.53%

1.15 1.16 1.27

2008

21.73%

2006 2008

	2008	2007	2006
	3,954	4,886	1,716
	-8,835	-12,724	-8,523
	6,519	7,714	3,098
	1,638	-125	-3,709

2006

2007 2008

2008

2007

2007

2006

2007

2006

2008

1,638

12

2009 549

"

"

"

"

"

"

"

"

427.98

12

BT

2009

1.75

2009

7.5%

× 21 15,750 /

	2010	2011	2012	2013	2014	2015
	21	21				0
	0	0	×1.75	0	0	×1.75
	1.575	1.575	1.575	1.575	1.575	1.575
	1.575	1.575	×1.75+1.575	1.575	1.575	×1.75+1.575
	28.875	27.3	×1.75+4.725	×1.75+3.15	×1.75+1.575	0

1 = (21)× (7.5%)

2 = +

3 = -

BT

BT

BT

6

T-6

T-6

T-6

5

T-5

" 1.7 " 1.7

1.7

2009

2009 104

BT

30.45

10

BT

BT
2009 2
BT
2009 105
2009
2009
104 BT
(BT)
12 6 3

1

2006

2008

1.20

2

2006

2008

2009

	1.61	2.42	2.56	1.72
1.73	1.70	2006	2008	1.20
		1.05		

2005

	2006	2008
1.86	1.88	1.81

2

3

1

2

3

1

2

83.8%

1

2

3

1

2

3

1

2

A+

AA-

" "

" "

" "

1 2

/

1

2

3

4

5

/

1

2

BT
2009 2

BT

2009 105

2009

2009 104

(BT)

2009

2009

2006-2008

0458-3887505

0458-3887506

153000

2

56

1410

010-88027099 88027266 88027151

010-88027190

100044

<http://www.ndrc.gov.cn>

<http://www.chinabond.com.cn>

2009

1			56 1410		010-88027099 010-88027895
2				3	022-28451647
3			5	8	010-88656571
4			166 A 2905		0551-5161705 0551-5161703
5			24	D	0371-63581566-7 207
6					0755-82033481
			22		

2006 2008

	2008 12 31	2007 12 31	2006 12 31
	70,120,469.26	53,737,678.45	54,984,312.22
	552,043,379.84	305,554,028.22	104,391,046.10
	28,826,782.15	30,802,103.33	27,921,004.20
	217,079,001.56	247,217,494.78	281,747,838.35
	2,549,408.64	3,277,791.05	3,169,587.89
	870,619,041.45	640,589,095.83	472,213,788.76
	1,699,936,282.07	1,690,124,018.07	1,681,328,375.62
:	245,385,661.05	164,099,362.14	83,418,539.18
	1,454,550,621.02	1,526,024,655.93	1,597,909,836.44
	1,454,550,621.02	1,526,024,655.93	1,597,909,836.44
	625,939,097.14	468,421,343.89	319,472,594.12

	2,080,489,718.16	1,994,445,999.82	1,917,382,430.56
	996,397,271.77	1,018,056,849.87	1,039,716,427.97
	996,397,271.77	1,018,056,849.87	1,039,716,427.97
	3,947,506,031.38	3,653,091,945.52	3,429,312,647.29
	2008 12 31	2007 12 31	2006 12 31
	137,062,406.07	89,489,558.55	98,296,754.37
	28,130,333.15	22,811,386.26	23,092,580.35
	3,054,049.32	4,877,794.63	3,137,535.50
		1,742,294.84	1,282,444.48
	41,059,382.39	35,380,318.77	24,937,125.18
	605,851.75	572,489.77	532,908.01
	30,410,959.10	27,596,989.46	31,447,824.21
	1,092,841.63	588,925.70	245,074.85
	241,415,823.41	183,059,757.98	182,972,246.95
	616,500,000.00	507,800,000.00	400,000,000.00
	616,500,000.00	507,800,000.00	400,000,000.00

	857,915,823.41	690,859,757.98	582,972,246.95
	2,009,348.60	2,016,974.07	2,012,039.45
	2,681,490,120.81	2,681,490,120.81	2,681,490,120.81
	2,681,490,120.81	2,681,490,120.81	2,681,490,120.81
	69,080,000.00	69,080,000.00	69,080,000.00
	33,701,073.86	20,964,509.27	9,375,824.01
	303,309,664.70	188,680,583.39	84,382,416.07
	3,087,580,859.37	2,960,215,213.47	2,844,328,360.89
	3,947,506,031.38	3,653,091,945.52	3,429,312,647.29

2006 2008

	2008	2007	2006
	256,270,154.35	241,926,053.01	161,346,356.77
	177,602,796.76	161,230,948.58	91,997,770.29
	8,120,151.80	7,639,849.58	3,807,680.26
	70,547,205.79	73,055,254.85	65,540,906.22
	1,580,030.95	317,242.37	297,111.80
	1,696,167.20	1,682,769.55	1,182,975.87
	11,560,898.39	15,982,722.23	8,545,044.90
	407,413.66	592,444.27	432,901.98
	58,462,757.49	55,114,561.17	55,677,095.27
	111,120,549.07	118,168,322.53	115,817,969.45
	287,332.95	39,200.00	765,801.58

	23,633.80	383,133.17	183,424.47
	169,847,005.71	172,938,950.53	172,077,441.83
	42,488,985.28	57,047,163.33	56,804,426.28
	-7,625.47	4,934.62	-4,002.83
	127,365,645.90	115,886,852.58	115,277,018.38
	188,680,583.39	84,382,416.07	-21,518,778.30
	316,046,229.29	200,269,268.65	93,758,240.08
	12,736,564.59	11,588,685.26	9,375,824.01
	303,309,664.70	188,680,583.39	84,382,416.07
	303,309,664.70	188,680,583.39	84,382,416.07

2006 2008

	2008	2007	2006
:			
	84,328,380.91	121,604,668.65	78,413,561.37
	0.00	0.00	0.00
	20,749,945.31	4,749,372.15	9,054,166.01
	105,078,326.22	126,354,040.80	87,467,727.38

	43,912,659.23	50,135,624.46	46,927,877.72
	16,703,781.80	14,351,238.64	13,893,402.44
	2,134,622.74	1,232,245.03	1,462,665.90
	2,783,523.01	11,774,271.03	8,020,835.96
	65,534,586.78	77,493,379.16	70,304,782.02
	39,543,739.44	48,860,661.64	17,162,945.36
:			
	319,385.00	3,500.00	97,000.00
	319,385.00	3,500.00	97,000.00
	87,844,239.00	126,698,735.07	84,813,456.53
	827,114.63	548,261.14	514,507.30
	88,671,353.63	127,246,996.21	85,327,963.83
	-88,351,968.63	-127,243,496.21	-85,230,963.83
:			
	138,000,000.00	121,000,000.00	62,025,000.00
	138,000,000.00	121,000,000.00	62,025,000.00
	29,300,000.00	13,200,000.00	9,080,000.00

	43,508,980.00	30,663,799.20	21,966,696.00
	72,808,980.00	43,863,799.20	31,046,696.00
	65,191,020.00	77,136,200.80	30,978,304.00
	16,382,790.81	-1,246,633.77	-37,089,714.47
	2008	2007	2006
1			
	127,365,645.90	115,886,852.58	115,277,018.38
	-7,625.47	4,934.62	-4,002.83
	853,075.78	6,016,546.66	-454,309.41
	81,327,829.11	80,798,726.47	41,868,002.39
	21,659,578.10	21,659,578.10	2,416,204.62
			0.00
()			
	-236,743.15	52,719.40	-178,236.86
(:)			
			0.00
	589,215.31	651,414.65	167,386.86
(:)			
(:)			0.00
(:)	732,982.41	-108,203.16	-887,138.55
(:)	-337,361,651.0	-197,680,484.44	-936,016.81
)	2		

(:)	144,621,432.45	21,578,576.76	-140,105,962.43
	39,543,739.44	48,860,661.64	17,162,945.36
2			
3			
	70,120,469.26	53,737,678.45	54,984,312.22
	53,737,678.45	54,984,312.22	92,074,026.69
	16,382,790.81	-1,246,633.77	-37,089,714.47

(本页无正文, 为 2009 年伊春市城市建设投资开发有限责任公司企业
债券募集说明书之盖章页)

伊春市城市建设投资开发有限责任公司

二〇〇九年九月

